



# Early Care and Education Updates(HSSCO)

AzSHA Quarterly Meeting  
February 2022



DEPARTMENT OF ECONOMIC SECURITY  
*Your Partner For A Stronger Arizona*

# Early Care and Education Investments

**Early Literacy  
Policy Framework  
(\$47.2M)**

**Quality Early  
Learning (\$45M)**

**Early Literacy  
Supports (\$2M)**

**Data Integration &  
ECE Financing  
Plan (\$1.5M)**



# High Quality Early Learning

The High-Quality Early Learning Grant, offered through the AZ DES- CCA, is to assist Arizona in developing and enhancing capacity to deliver high-quality preschool programming as well as implement and sustain high-quality preschool for eligible children in selected high-needs programs.



Week of  
2/21

# Data Integration & ECE Strategic Finance Plan

- **Partnership with Bipartisan Policy Center**
- **First phase: Child Care Gap Report/Tool (Fall 2020)**
- **Second phase: Fiscal Mapping cohort of five states to analyze state and federal investments in child care and other early childhood supports (w/ Children's Funding Project)**
  - **Purpose: to understand how AZ is leveraging ECE resources across various funding streams**
- **3<sup>rd</sup> Phase: Child Care Gap Part 2 & Fiscal map at municipality level**
- **Work group: ADE, DES, FTF, Head Start**





# Comprehensive Literacy State Development Grant



DEPARTMENT OF ECONOMIC SECURITY  
*Your Partner For A Stronger Arizona*

# Grant Goals

The Arizona CLSD project is a competitive grant that proposes to improve child literacy skills and instructional capacity on the science of reading. This grant project aims to strengthen collaboration, improve efficiency and drive innovation to accelerate language and literacy outcomes.

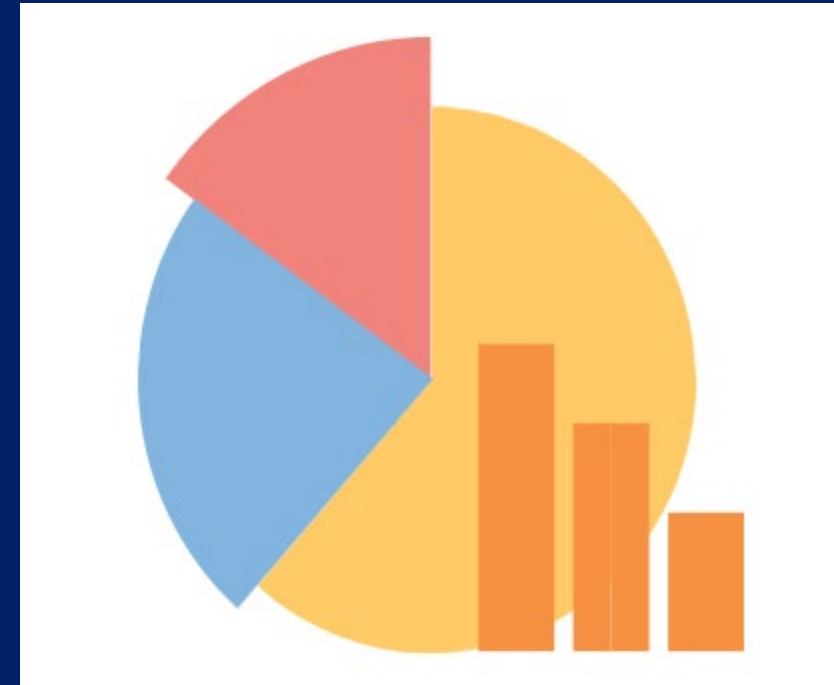
- **Building the capacity** of educators to serve struggling and emerging readers more effectively.
- Increase the number of disadvantaged students who have access to high-quality instructional **staff trained in the Science of Reading**
- Increase state capacity and **infrastructure** to implement high-quality, evidence-based practices and strategies to support struggling readers.



# Literacy is Equity

Data used to determine those schools and early learning programs most-in-need

- Minimally Proficient ELA Trend Data
- Census Track Data: Poverty, Opp Zone, Rural, Tribal Land
- Free and Reduced Lunch Data
- Preschool Gap Data



# Grant Beneficiaries

## Impact of the CLSD Grant Initiative



- 12 Counties
- 23 Subgrantees
  - 40 Sites



- 750 Educators
- 13,800 Students



# Solutions

## Evidence-Based Strategies & Professional Development

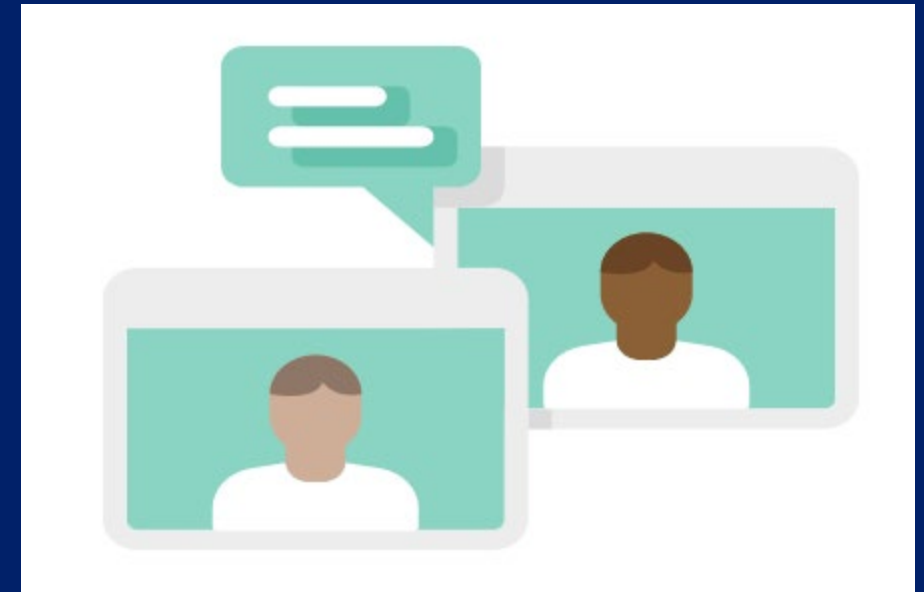
- Literacy Coaching
- Language Essentials for Teachers of Reading and Spelling (LETRS)
- Reading Fundamentals Training
- Tier I and Tier II Curricula
- Lectio- leveraging improvement science to make informed decisions
- Family Engagement



# Resources

## Supports Created for CLSD Grantees

- Evidence-Based Intervention Trainings
- Implementation Science Trainings
- Online Courses (CEUs)
- ESSA Tiers trainings
- Dedicated Office Hours
- Dedicated Science of Reading Website





# Kindergarten Entry Assessment



DEPARTMENT OF ECONOMIC SECURITY

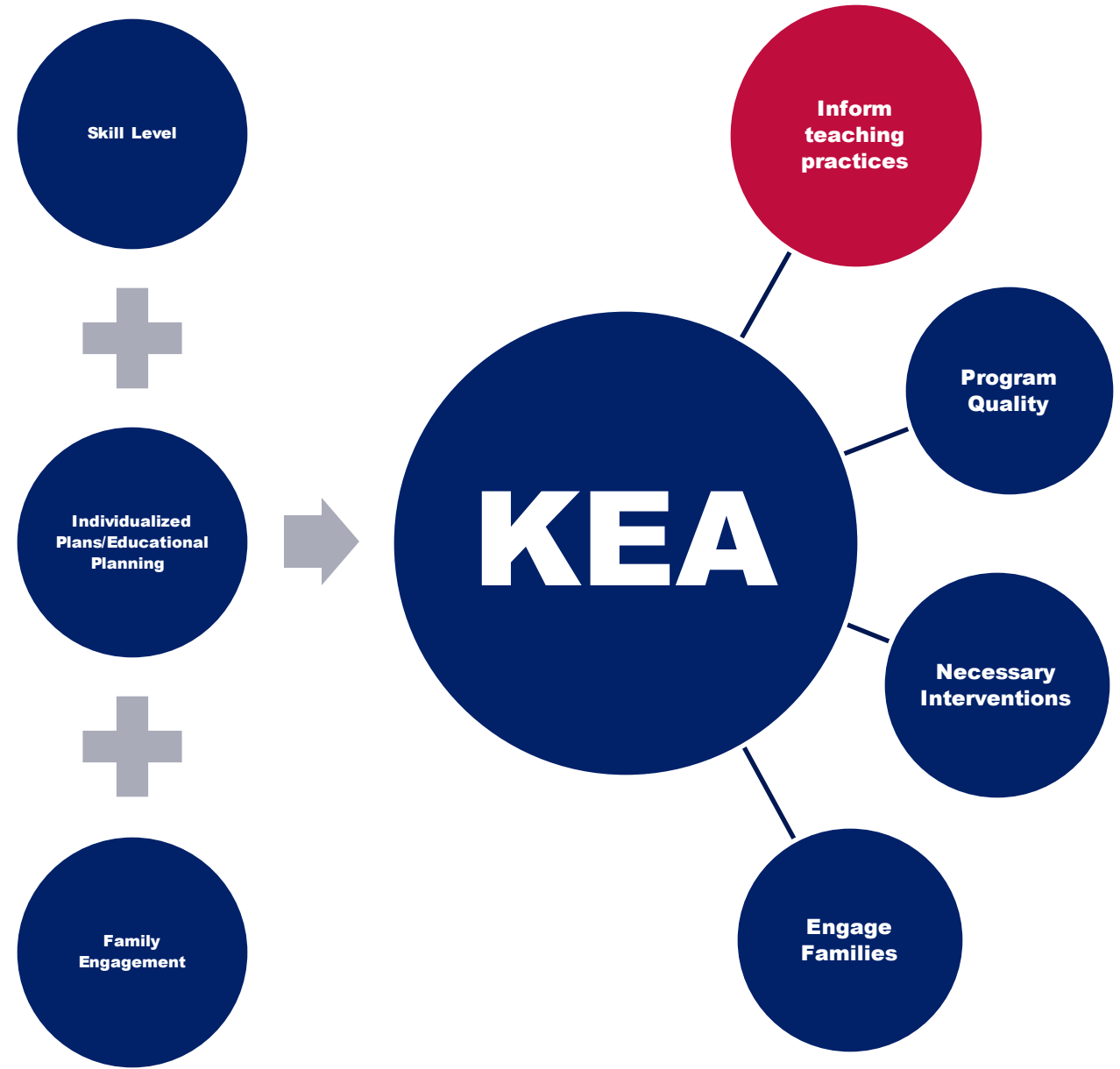
*Your Partner For A Stronger Arizona*



- **Kindergarten Entry Assessment**

SB1572

**Provide for universal screening of pupils in preschool programs, kindergarten programs and grades one through three that is designed to identify pupils who have reading deficiencies pursuant to section 15-704.**



- **Vision For The Assessment**

Assessment Features

- **At its core, the KEA should be a criterion-referenced assessment**
  - Widely Held Expectations (WHE) designations
    - Measure where a child's development and learning fall relative to research-based expectations for their age, class, or grade
  - Kindergarten-readiness (KR) designations\*
    - Measure whether a child has achieved the knowledge, skills, and abilities that best prepare them for success in kindergarten
- **But also offers norm-referenced measures**
  - One kind of norm-referenced scores:
  - Percentile scores (in quartiles)\*
    - Measure how a child's development and learning compares to that of same-aged peers from a nationally representative sample of children assessed during the same checkpoint period

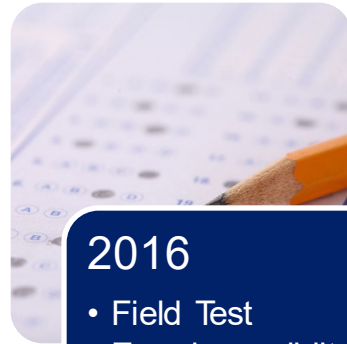
- **KEA**

## History (Timeline)



2015

- Cognitive Labs
- Assessment Pilots



2016

- Field Test
- Examine validity and reliability



2017

- Request For Proposals
- Tool Implementation



2021-

- KEA Legislation
- RFP Process
- Statewide Implementation



LRM



FIRST THINGS FIRST

# Kindergarten

<https://www.azed.gov/ece/kindergarten>

## Kindergarten

▶ **Current Kindergarten Legislation**

▶ **Kindergarten Entry Assessment (KEA)**

▶ **KEA Resources**

▶ **The Kindergarten Experience**

▶ **Kindergarten Transition**

▶ **Full Day Kindergarten**

### FAQ for Kindergarten

---

What is the age requirement for Kindergarten entry in Arizona?

+

---

What is the Arizona legislation regarding Kindergarten entry?

+

---

Can a child enroll in Kindergarten if his/her birthday is September 1st or later?

+

---

Is there a standardized placement exam for early Kindergarten entry?

+

---

Can a child enroll in Kindergarten if he/she turns 5 after December 31st?

+